

Supplementary Materials

I. MORE VISUAL RESULTS ON VIDEO MATTING

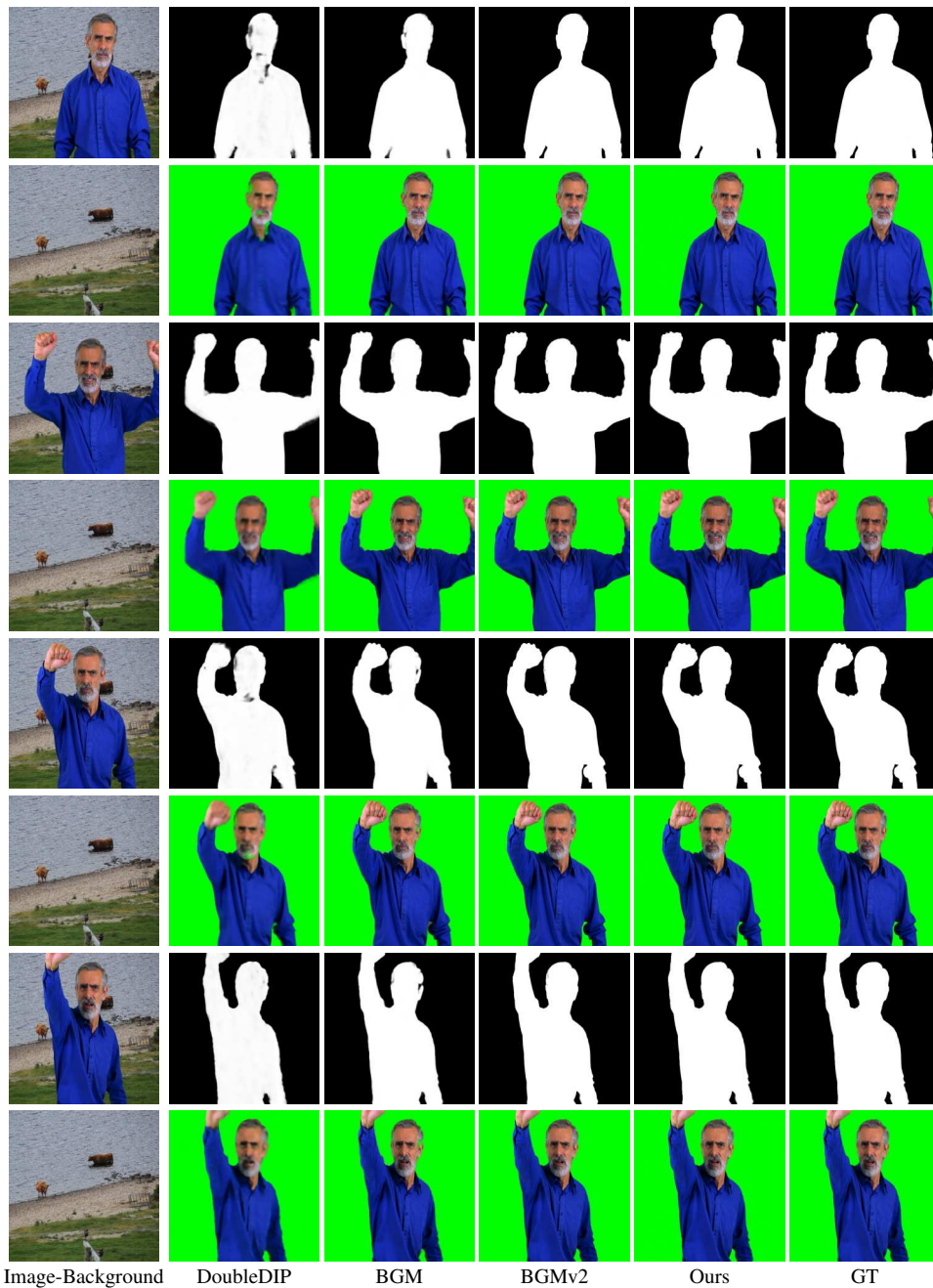


Fig. 1: Comparison of alpha mattes predicted by different methods on portrait video #1 from VideoMatte240K. F means foreground.

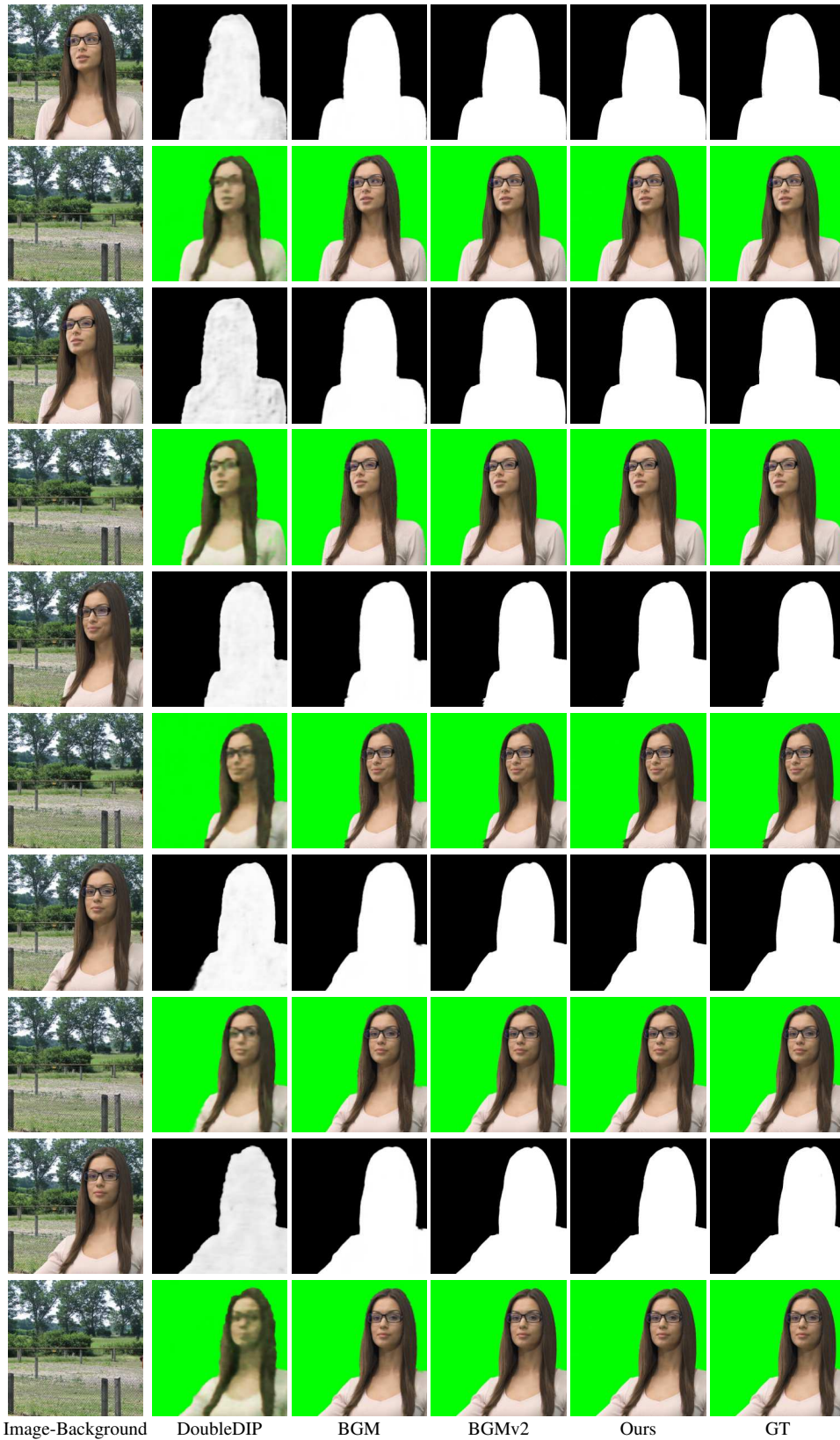


Fig. 2: Comparison of alpha mattes predicted by different methods on portrait video #2 from VideoMatte240K. F means foreground.

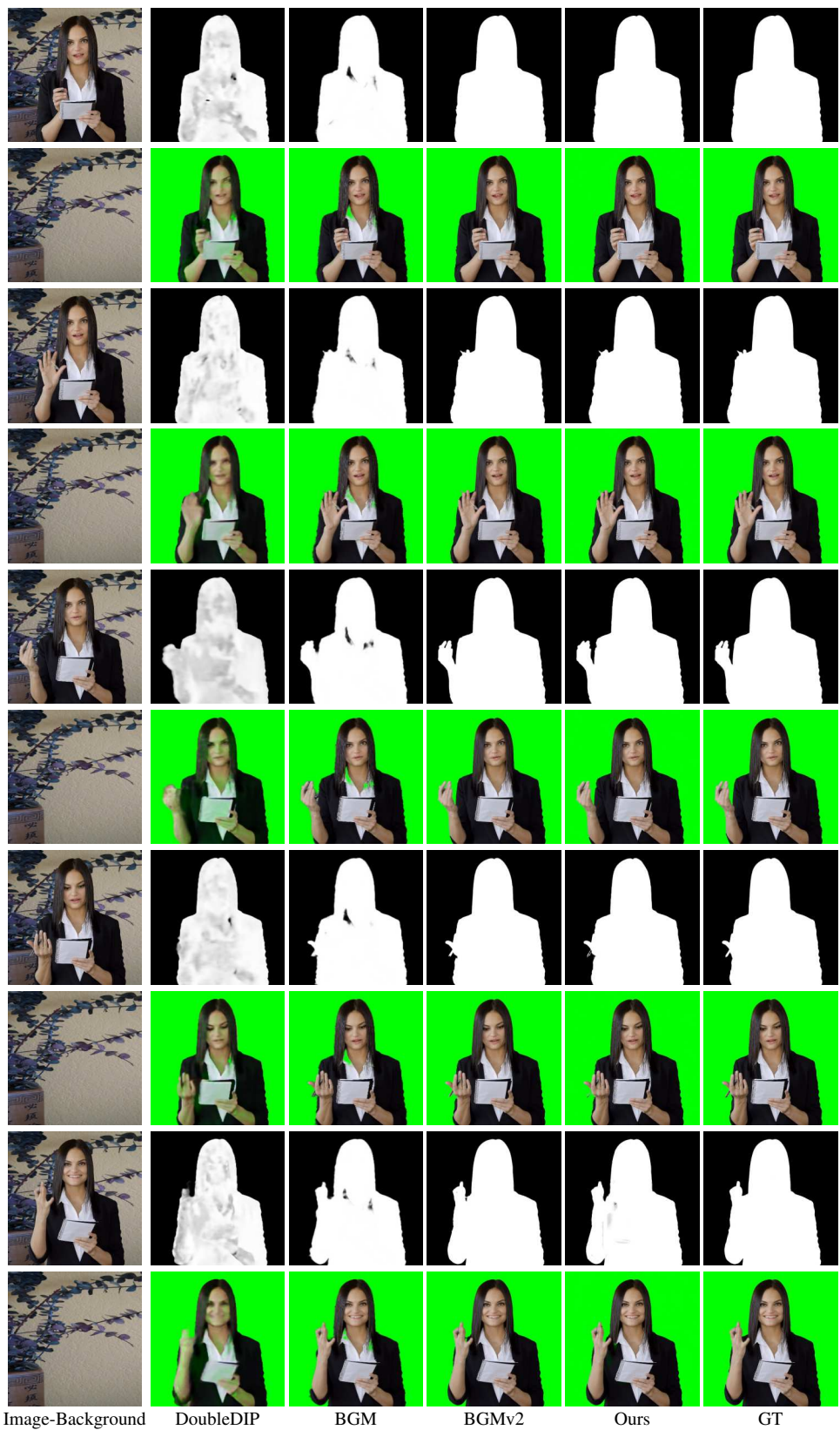


Fig. 3: Comparison of alpha mattes predicted by different methods on portrait video #3 from VideoMatte240K. F means foreground.

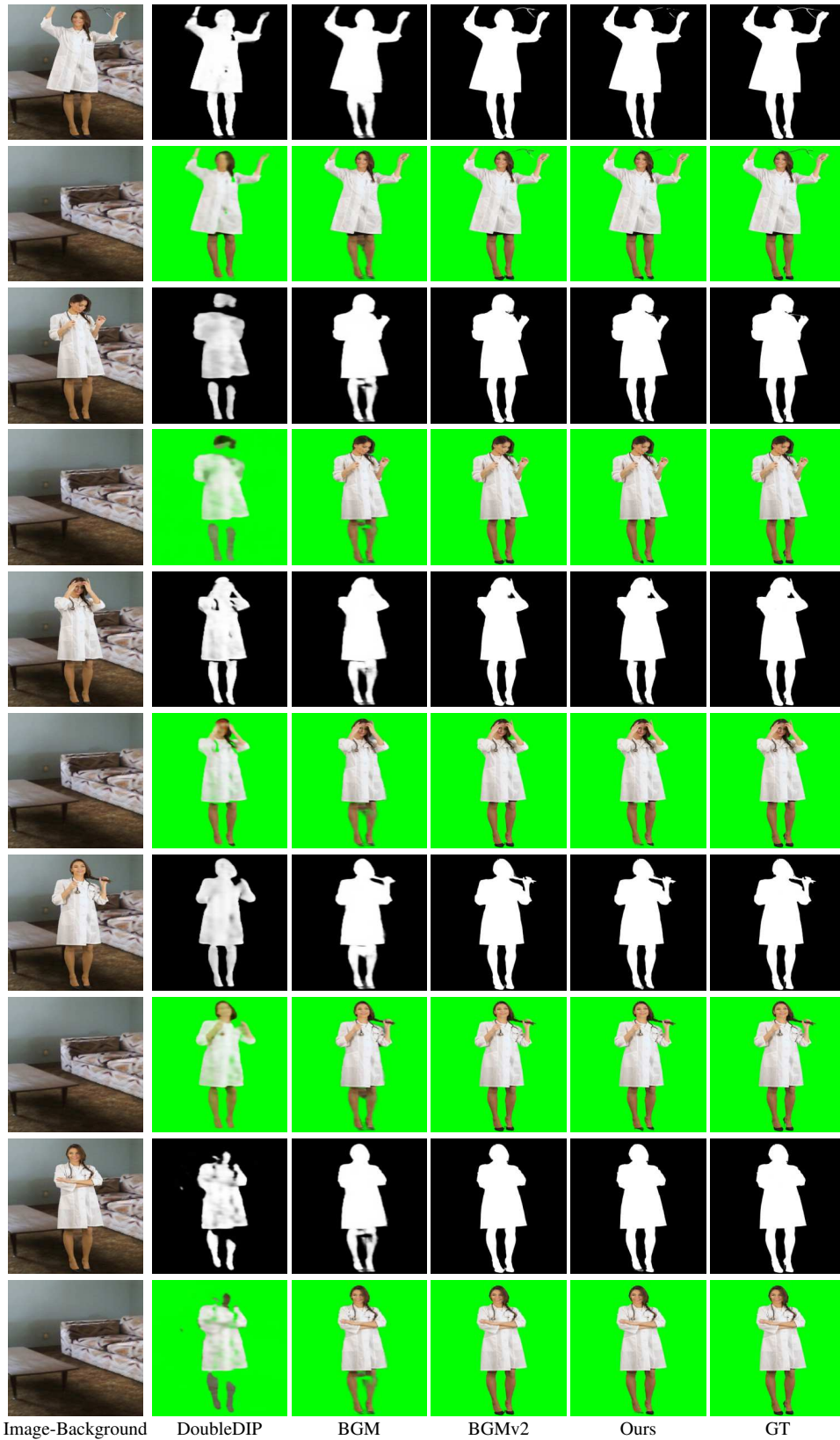


Fig. 4: Comparison of alpha mattes predicted by different methods on portrait video #4 from VideoMatte240K. F means foreground.

II. MORE VISUAL RESULTS ON IMAGE MATTING ON REAL DATA

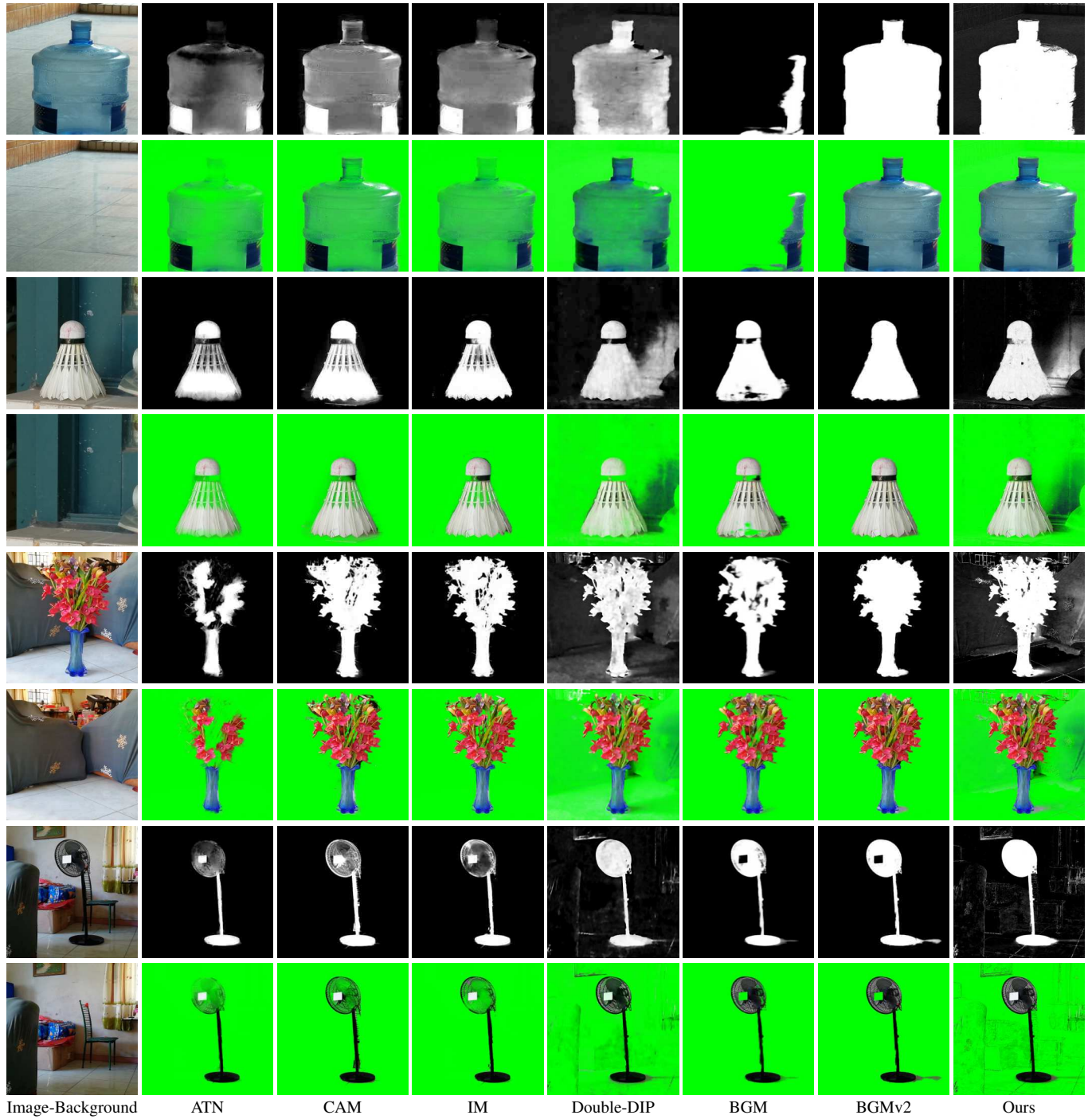


Fig. 5: Comparison of compositions by different methods on some non-portrait images from our real data.

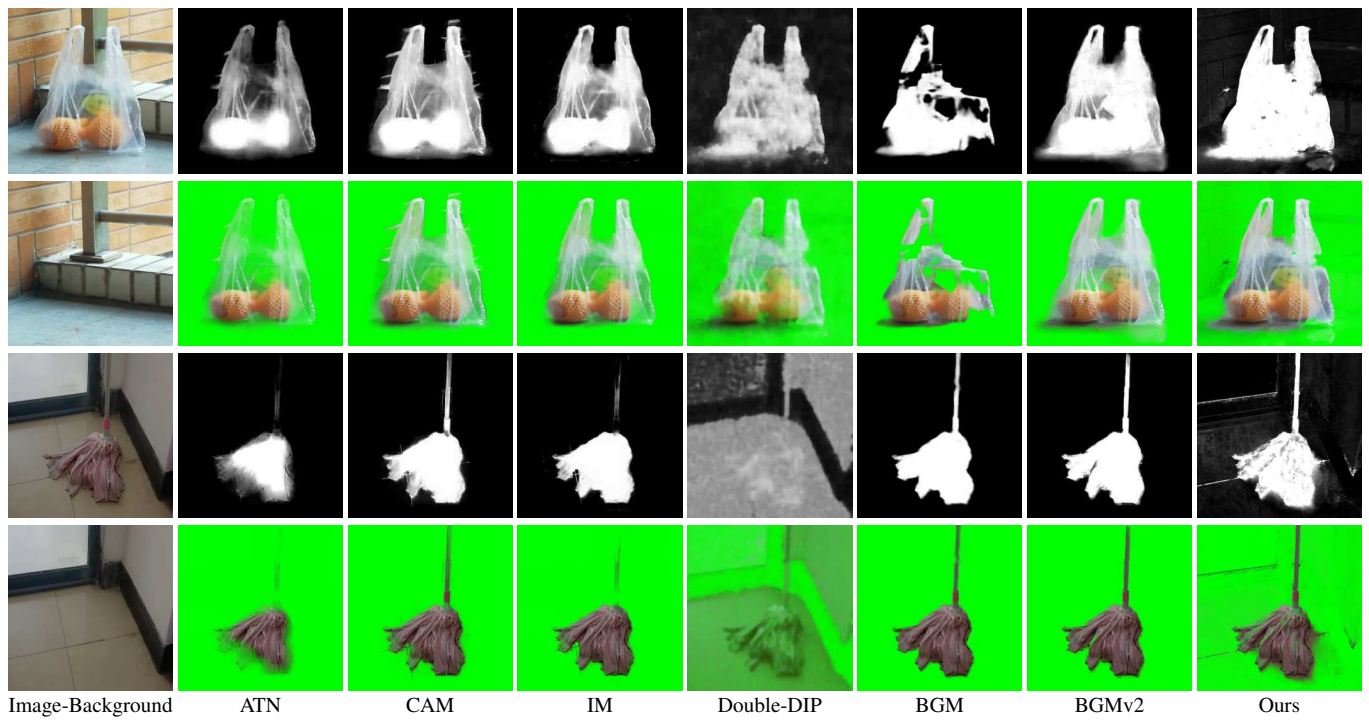


Fig. 6: Comparison of compositions by different methods on some non-portrait images from our real data.



Image-Background

ATN

CAM

IM

Double-DIP

BGM

BGMv2

Ours

Fig. 7: Comparison of compositions by different methods on some portrait images from our real data.

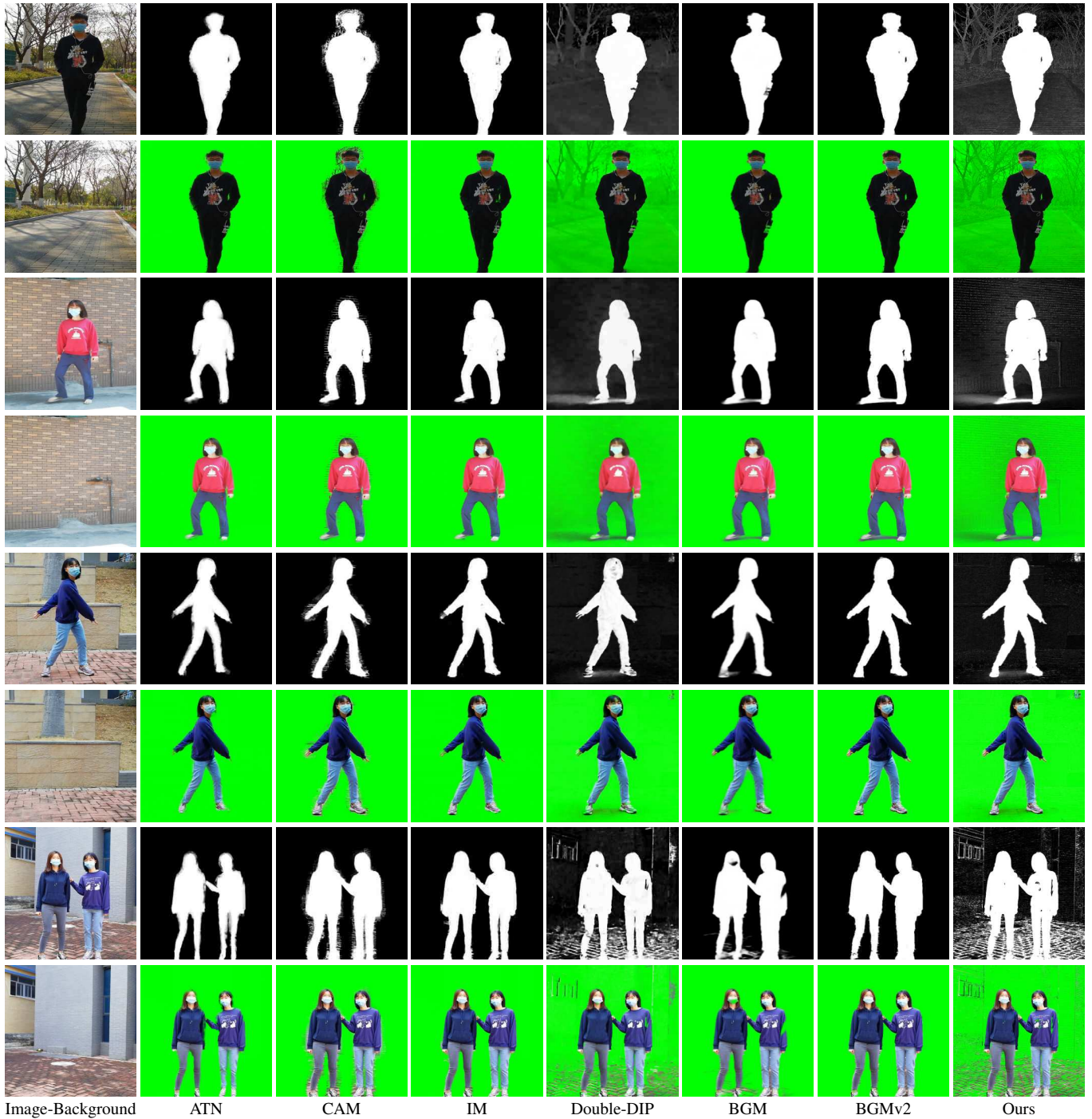


Fig. 8: Comparison of compositions by different methods on some portrait images from our real data.